



HÖLSCHER
LEUCHTEN

Hölscher Leuchten GmbH
Haferbachstr. 9-15
32791 Lage Germany

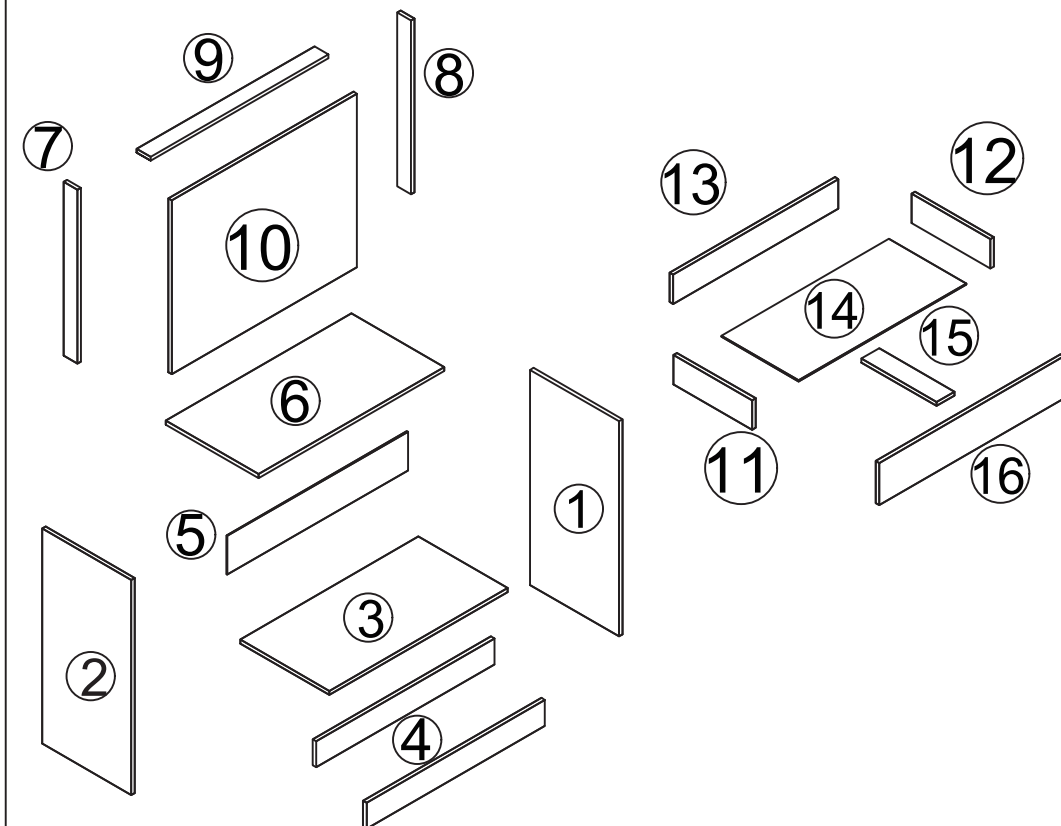
Artikel nummer: S410 410



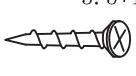


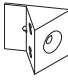
ASSEMBLY INSTRUCTION

- It would be best if you set aside and organize all pieces & corresponding "nuts/bolts" first.
- Please follow the instructions to assemble the items correctly.
- Could be assembled by one person ,but would recommend two.
- Please ensure the safety of the glass when assembling.
- Do not make the screws too loose or too tight.
- As shown in the figure, Insert the screw into the hole.
The arrow in the picture, Then rotate 90° or 180° clockwise.
- The remaining parts are spare parts.

SAFETY INFORMATION

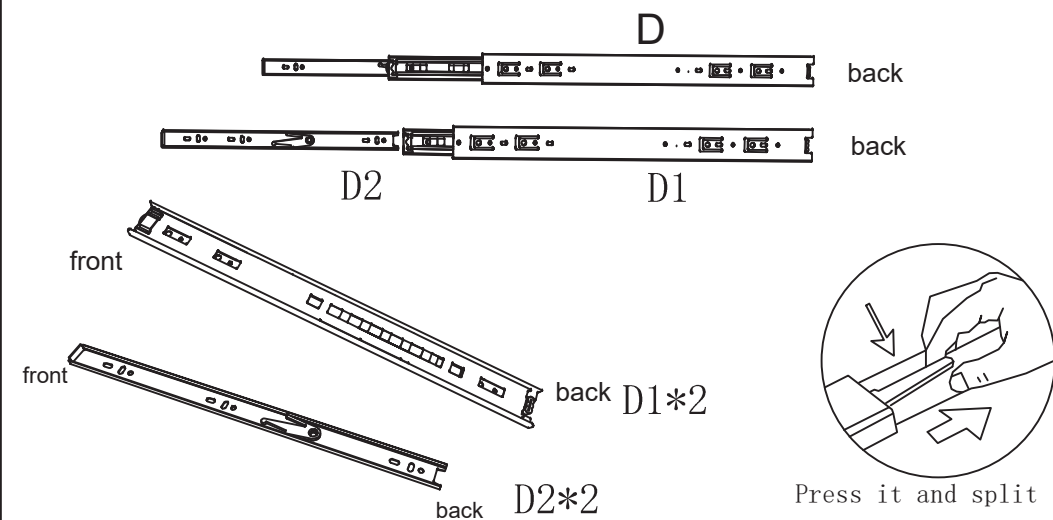
- The accessory bag contains some small accessories , which should be kept away from children.
- Kids are not allowed to climb or play with the product for safety reasons



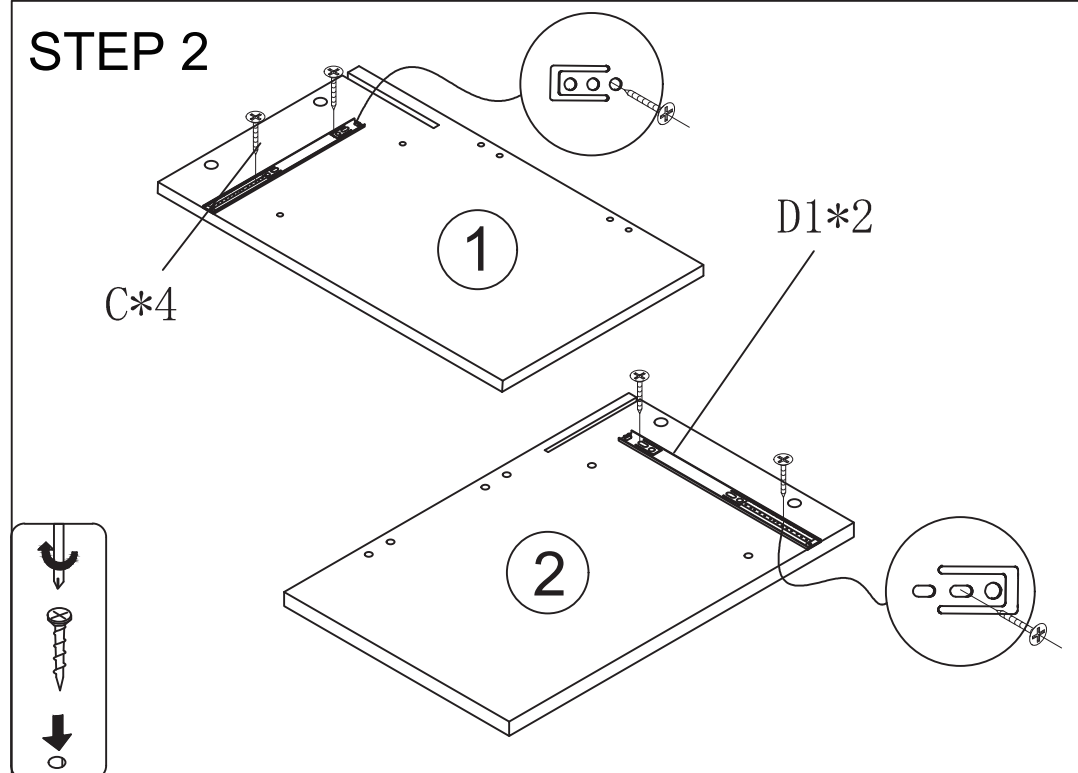
 A*45	 B*45	 3. 5*14 C*14	 D*1	 E*10
 F*6				

STEP 1

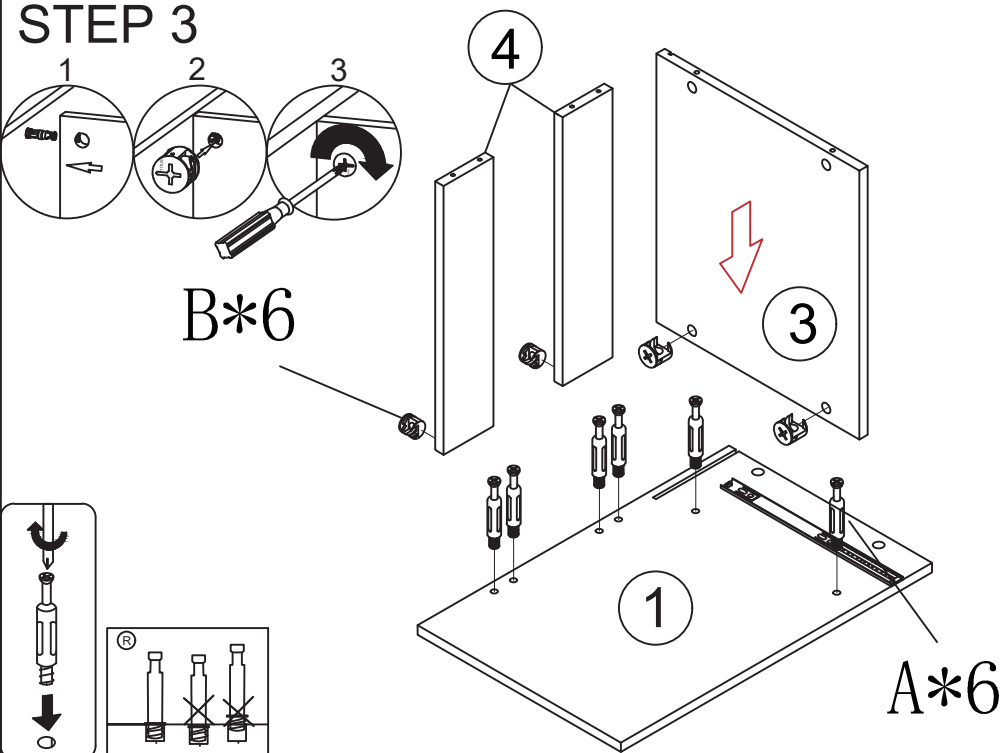
Warm Reminder:
Before installing the drawer rail,
you need to separate the D1 and D2 first.



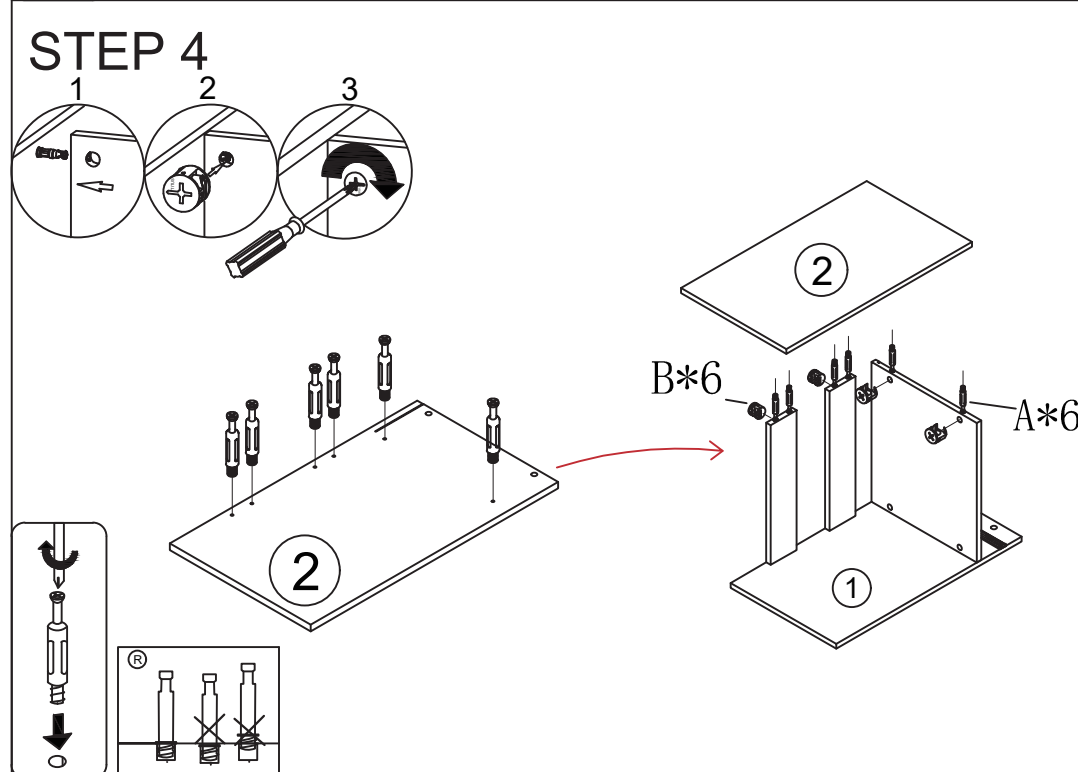
STEP 2



STEP 3



STEP 4



STEP 5

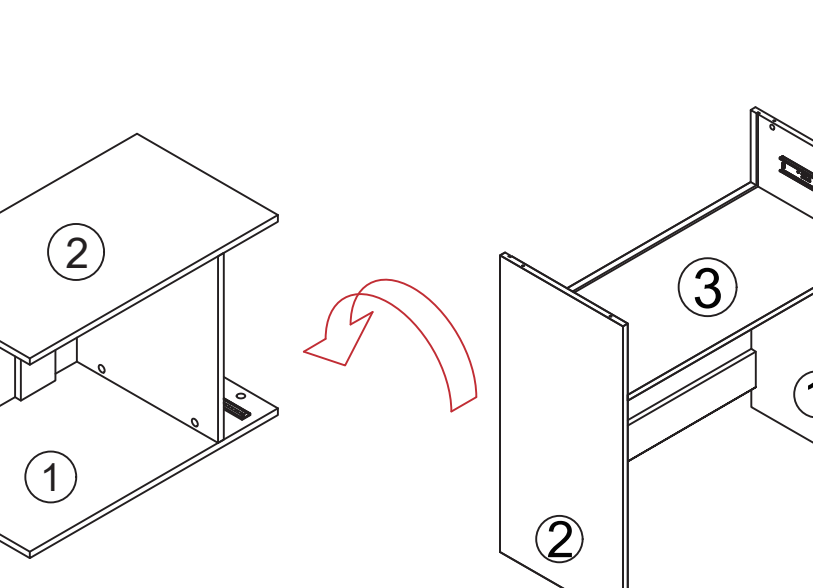


Diagram illustrating Step 5 of the assembly process. The diagram shows two views of the cabinet structure. On the left, the cabinet body is shown with the top panel (2) and the base panel (1) already attached. A red curved arrow indicates the movement of the front panel (2) from the right view to its final position. On the right, the front panel (2) is shown being moved into place, with the top panel (3) and the base panel (1) already attached.

STEP 6

Diagram illustrating Step 6 of the assembly process. A red arrow points down to the top panel (5), which is being attached to the top of the cabinet frame (3). The side panels (1 and 2) are already in place.

STEP 7

1

2

3

6

2

1

3

B*4

A*4

®

STEP 8

1 2 3

9

B*2

A*2

8

7

Ⓜ

